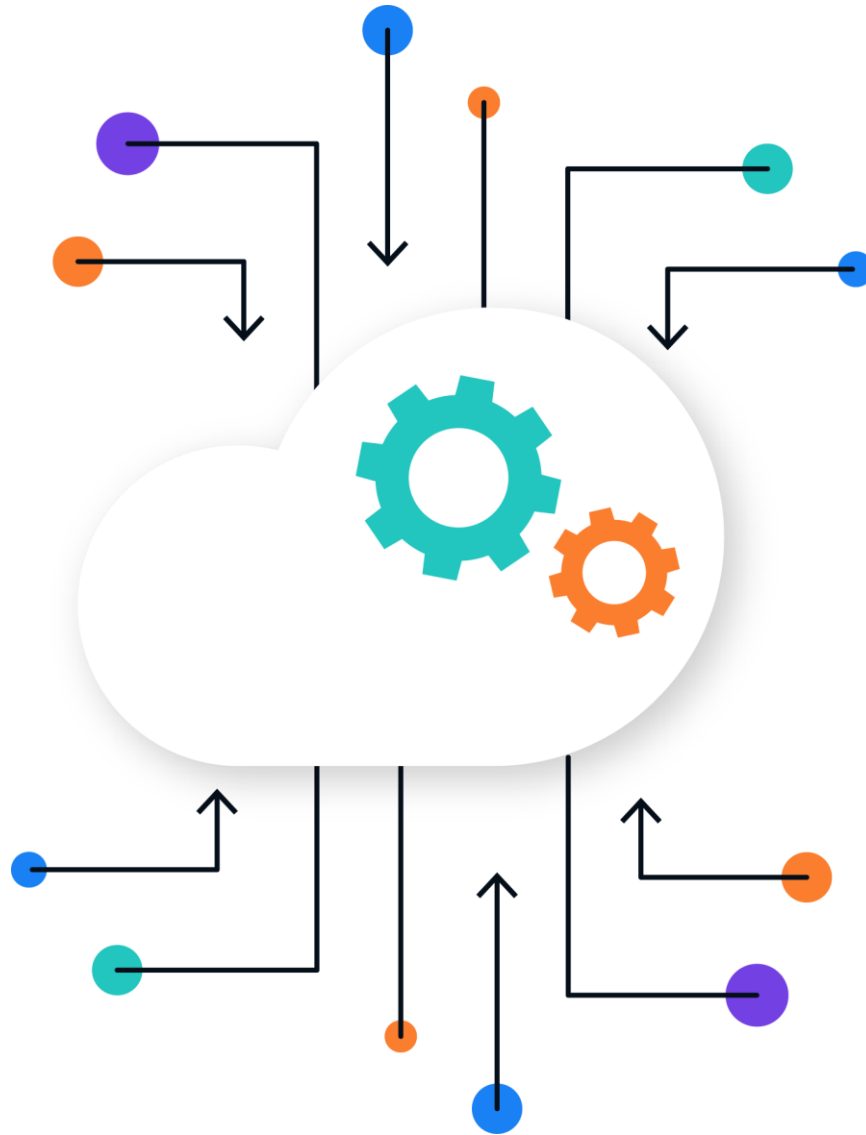


RHAPSODY



Rhapsody Envoy

STANDARD INTEGRATION LIBRARY

Overview

At Rhapsody, we draw on decades of healthcare interoperability experience to deliver integrations that are fast, reliable, and repeatable. To support that mission, we've developed a set of standard integrations for Envoy deployments—reflecting common use cases and best-practice patterns across APIs and other healthcare standards.

The Envoy Standard Integration Library enables faster delivery and reduced total cost of ownership for our customers. Integrations included in this library are eligible for under standard integration pricing for Envoy Edge and Envoy iPaaS.

Integrations that fall outside of this list are subject to an advanced integration uplift. The Rhapsody team will partner with you to evaluate each use case and determine fit within the Standard Integration Library.

Envoy Standard Integration Library

- Proprietary APIs utilizing any of the standards below
- [FHIR bundle](#) or resource with well-defined mappings
- [HL7 v2](#) with well-defined industry standard mappings
- X12 pass-throughs
- [PIX](#) transactions with well-defined industry standards
- [PDQ](#) transactions with well-defined industry standards
- Rhapsody Identity integrations with well-defined mappings

Note: Rhapsody actively monitors changes in healthcare standards and updates the Envoy Standard Integration Library periodically to reflect the most relevant and widely adopted use cases.