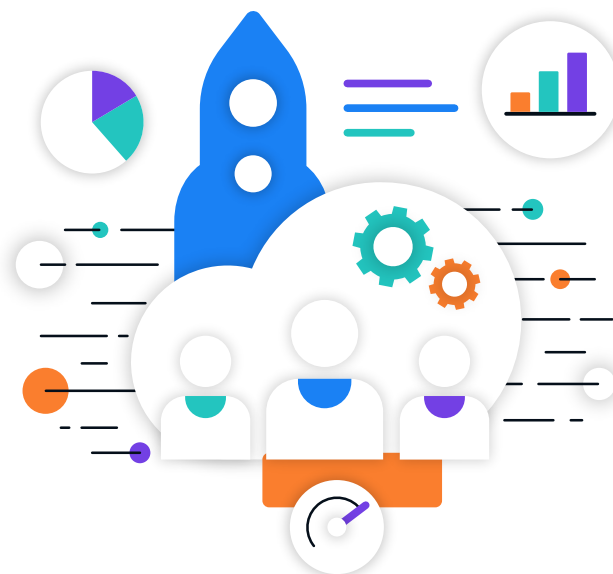


Speed Up Any-to-Any Health Data Integration

With rapid advances in healthcare AI, data sharing regulations, and value-based care, staying ahead requires seamless data integration that enhances your workflows and supports quality data exchange. Envoy makes complex integrations fast and easy, leveraging proven technology and expertise to connect patient data from any source to any destination, allowing your team to focus on strategic initiatives rather than investing in specialized resources.



Top ranked

Integration engines in KLAS

1,900+

Customers worldwide

100%

Healthcare focused

Touch-free interoperability

Envoy iPaaS simplifies health data integration with automated workflows and seamless EHR connectivity, enabling you to innovate faster and reduce staffing and technology costs. Trusted by over 1,700 organizations and Epic, Envoy offers global 24/7 support, flexible deployment, and pre-built integrations, ensuring efficient, scalable solutions and compliance with data regulations.

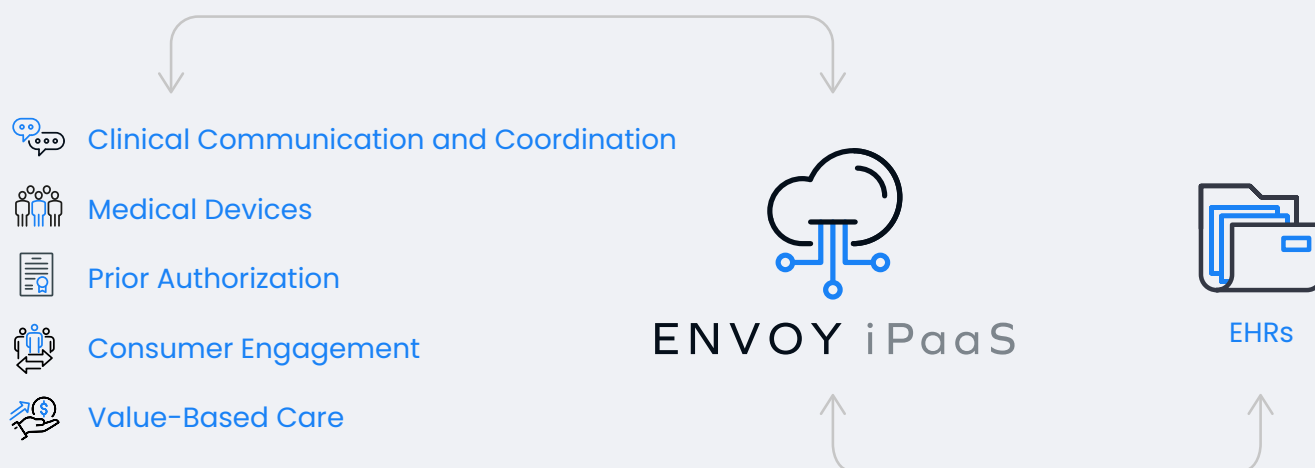
"Because we chose Envoy iPaaS, we were able to quickly launch this clinical trial and automate an otherwise manually intensive workflow."

Mike Hawn

SVP Data Services & Product Solutions
for BioIntelliSense

Repeatable integrations with EHRs, including:





Scale with confidence

Envoy operates as a secure cloud service for healthcare, offering automatic updates and proactive monitoring and alerting. It supports a wide range of integration use cases with proven technology, delivering the design, development, testing, and deployment of the data connections you need.

What we offer

Global reach

Technology proven in health and social care delivery systems worldwide, with 24/7 global support across all major time zones.

Data privacy and security by design

Robust security and compliance with global data privacy regulations such as GDPR, HIPAA, SOC2 Type 2, ISO 27001, and HITRUST, protecting data at rest and in transit.

Use cases

The Rhapsody approach to getting you the data you need prioritizes security, scalability, and speed. Product and tech leaders like you use Envoy to support workflows such as:

Population Health

Patient Engagement

Chronic Condition Management

Prior Authorization and Claims Management

Telehealth

Value-Based Care

Clinical Decision Support

AI-Assisted Medicine

Supply Chain Optimization

Medical Imaging AI

Are you looking to take the stress out of connecting to EHRs?