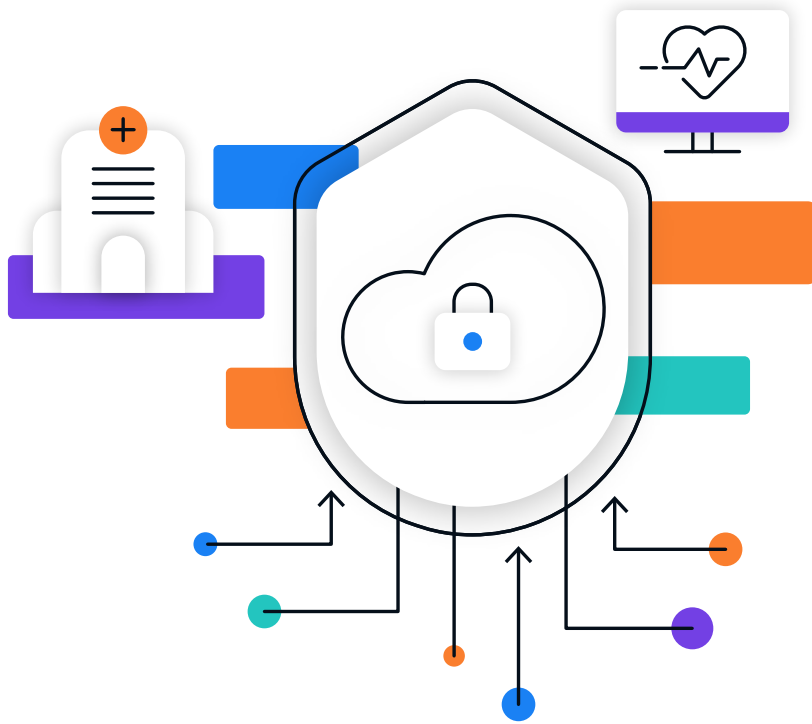


An API Gateway Built for Healthcare and FHIR Enablement



Rhapsody API Gateway is designed to help you manage, monitor efficiency, gain transparency, and protect against cybersecurity threats with a trusted entry point for API authentication and communication.

Product Overview

Security

Rhapsody® API Gateway handles authentication so you can focus on getting data where it's needed. Robust transaction logs of inbound/outbound API traffic activity ensures that you have a comprehensive and compliant record of all who are requesting or receiving data from your organization.

Security features:

- Industry-standard authentication methods supported:
 - SmartOnFHIR
 - OAuth 2.0*
 - Basic auth
 - Certificate auth
 - Basic auth + Certificate auth

If an OAuth2.0* server is required, the API Gateway can be configured with an industry-leading OAuth2.0 server.

- Three features that aid in transparency and safety in the data flowing through your system
 - **Traffic logs:** Note where API calls are coming from and what they are requesting

- **Patient data access:** What data is being requested and returned about individual patients
- **Configuration and monitoring:** Shows if there is an issue that needs to be responded to
- Rate limiting
 - Limit the amount of traffic that flows to internal systems, protecting resource usage and denial of service

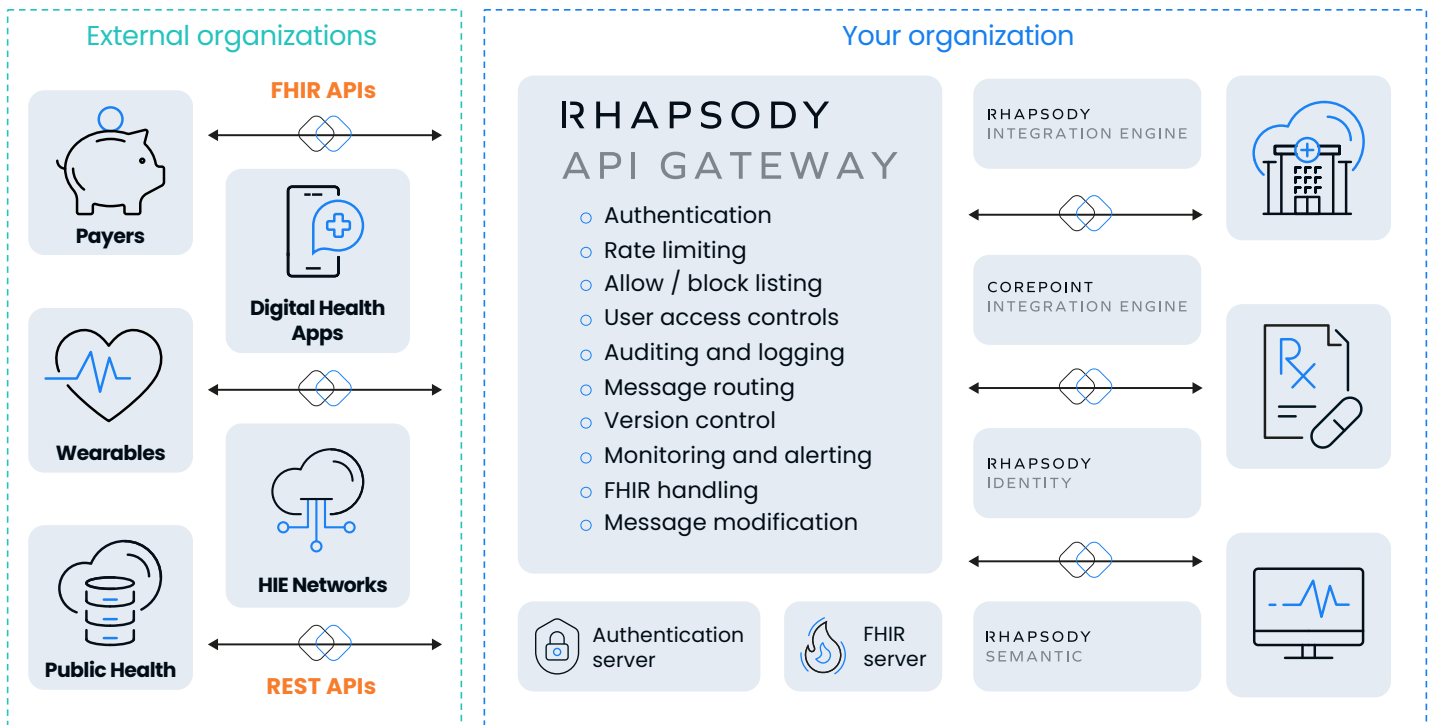
Future-Proofed Architecture

Providing a single API entry point to control security for all REST-based traffic plus share data while investing less time to establish and maintain API connections today and in the future.

Seamless Integration

Use the API Gateway alongside your integration engine to transform and process messages before and after the API is called

Rhapsody API Gateway in Action



Effective Issue Management

Rhapsody API Gateway enables you to visualize current status—helping you identify and resolve issues quickly. Status/visibility updates include:

Gateway Monitor

Check the status and alerts happening with gateways

Transaction Logs

View and search the transactions that are coming in and going out of gateways.

Deployment Logs

View and search the deployment of your gateways to find issues related to setup.

Metrics

View metrics such as message volume and size associated with gateways on different graphs based on date and time.

Native FHIR Handling

With Rhapsody API Gateway you have the option of being deployed with a best-in-breed FHIR server, ensuring native FHIR resource level controls. If you don't have a FHIR server and your data is not currently stored in a FHIR-compliant format, Rhapsody can help.

Ready to learn more about how the Rhapsody API Gateway works alongside your integration engine?